

Sustainable from the source



Sustainable processes delivering sustainable products

As an environmentally conscious company, Rockwool promotes the sustainable production and use of insulation and is committed to a continuous process of environmental improvement.

Although Rockwool is a major international corporation, it is also a business that has at its core a strong sense of responsibility and obligation to the local communities it works with. This sense of responsibility started in the 1950s long before Corporate Social Responsibility became a widely developed concept and is pivotal to Rockwool's beliefs and the way it operates. In 1981 the Rockwool Foundation was formed: a not for profit organisation with the objective of supporting scientific, humanitarian, artistic or social goals, contributing to the improvement of the environment and the general development of society. A majority shareholding has been transferred to the Foundation by the Kahler family, founders of Rockwool, ensuring that it is, and will remain, the largest single shareholder in the company - an enduring commitment to social responsibility.

Contents

An introduction to Rockwool	3
The road to zero carbon	4
Comparing Rockwool to other energy saving measures	5
Building up to new standards	6-7
Sustainable Rockwool	8
Committed to energy efficient, low emission production	9
Reduce, Reuse, Recycle	10-12
Recycling Case Study	13
Life cycle analysis	14
Corporate and social responsibility	15-16
Awards and achievements	17
Why choose Rockwool?	18



An introduction to Rockwool

Rockwool in Ireland

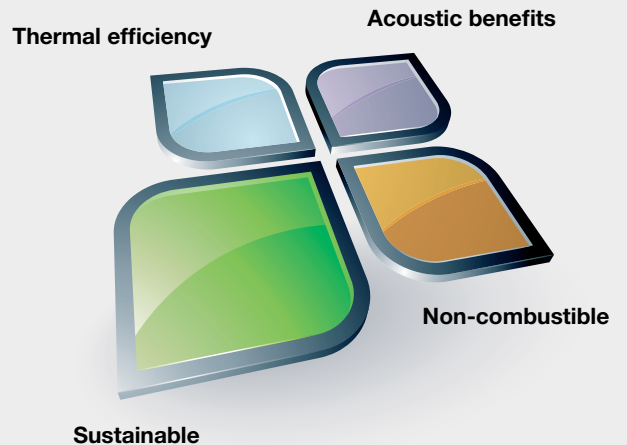
Rockwool's Irish Sales and Marketing operation is based in Santry, Dublin. Products for the Irish market are manufactured at our factory near Bridgend in South Wales. We built our factory on a reclaimed industrial site and began production in 1979. From this small beginning, we now employ over 400 people at our manufacturing site, where we have amongst the most technologically advanced production facilities in the world, and at our offices in London and Dublin.

Taming the volcano

Stone wool production at the Rockwool factory is a highly sophisticated process. The Rockwool process resembles the natural action of the volcano. Stone wool is made by melting diabase rock and recycled briquettes, made with carefully selected by-products from our own and other industries, in a cupola furnace. The melt is directed from the base of the furnace onto spinning wheels to form the Rockwool fibre structure. Small amounts of binder and oil (typically 3% of total product content) are added to provide a stable, water repellent insulation product. The stone wool is then heated to cure the binder before final processing into a variety of products. Environmental equipment - filters, pre-heaters, after-burners, and other cleaning and collection systems - makes the 'tamed volcano' an environmentally responsible process.

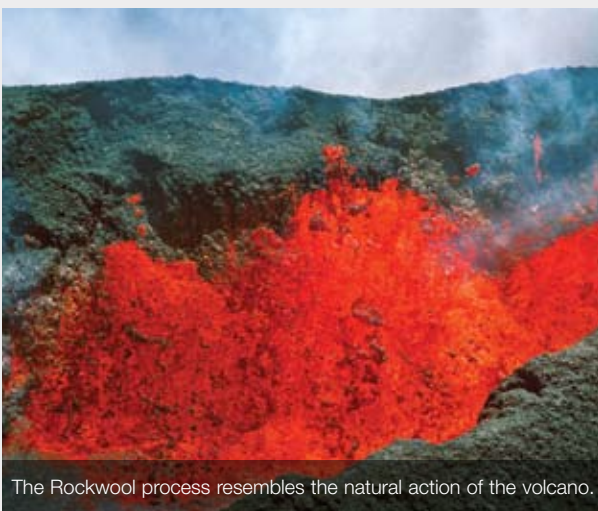
The 4-in-1 effect

Rockwool insulation products exhibit exceptional Thermal, Fire, Acoustic and Sustainable properties in an unrivalled combination. Rockwool delivers 4 superior benefits from 1 product.



People and the environment

For an introduction to the Rockwool Group, its history, activities and products worldwide, please view the video at www.rockwool.ie/peopleandenvironment



The Rockwool process resembles the natural action of the volcano.



Rockwool invests in manufacturing equipment ensuring the production of stone wool is an environmentally responsible process.

The road to zero carbon



Relying on entrapped air for their thermal properties, Rockwool insulation products have zero Ozone Depleting Potential and zero Global Warming Potential.

Global warming, cutting CO₂

Rockwool is manufactured using a state-of-the-art production process that does not use, and has never used, harmful gases such as CFCs, HCFCs, HFCs, in fact any 'blowing agents' that have Ozone Depleting Potential or Global Warming Potential.

Rockwool insulation simply relies on entrapped air for its thermal properties.

Carbon Dioxide (CO₂) is the main greenhouse gas accounting for about 67% of total Ireland greenhouse gas emissions. Irish CO₂ emissions were estimated by the Environmental Protection Agency to be almost 70 million tonnes in 2007.

Ref: <http://erc.epa.ie/ghg/nirdownloads.jsp>

The EU has a Kyoto target of an 8% reduction in greenhouse gases between 2008 and 2012 with respect to 1990 levels. Between 1990 and 2007 Ireland has experienced a phenomenal economic growth of 150% which inevitably drove emissions upwards as the rate of housebuilding and infrastructural development increased to meet the needs of this surge. In recognition of this Ireland's target in meeting the overall aim was a limit of 13% increase in greenhouse gas emissions above the 1990 levels. The National Climate Change Strategy 2007 - 2012 has set out a range of measures to build on achievements made under the first Strategy which shows clearly that the necessary emission reductions will be delivered.

Ref: www.environ.ie/en/Environment/Atmosphere/ClimateChange/NationalClimateChangeStrategy/

The use of thermal insulation provides a practical and cost effective means of reducing energy consumption in the home and in industry. This reduces the need to burn fossil fuels, reducing CO₂ emissions and helping to minimise global warming.

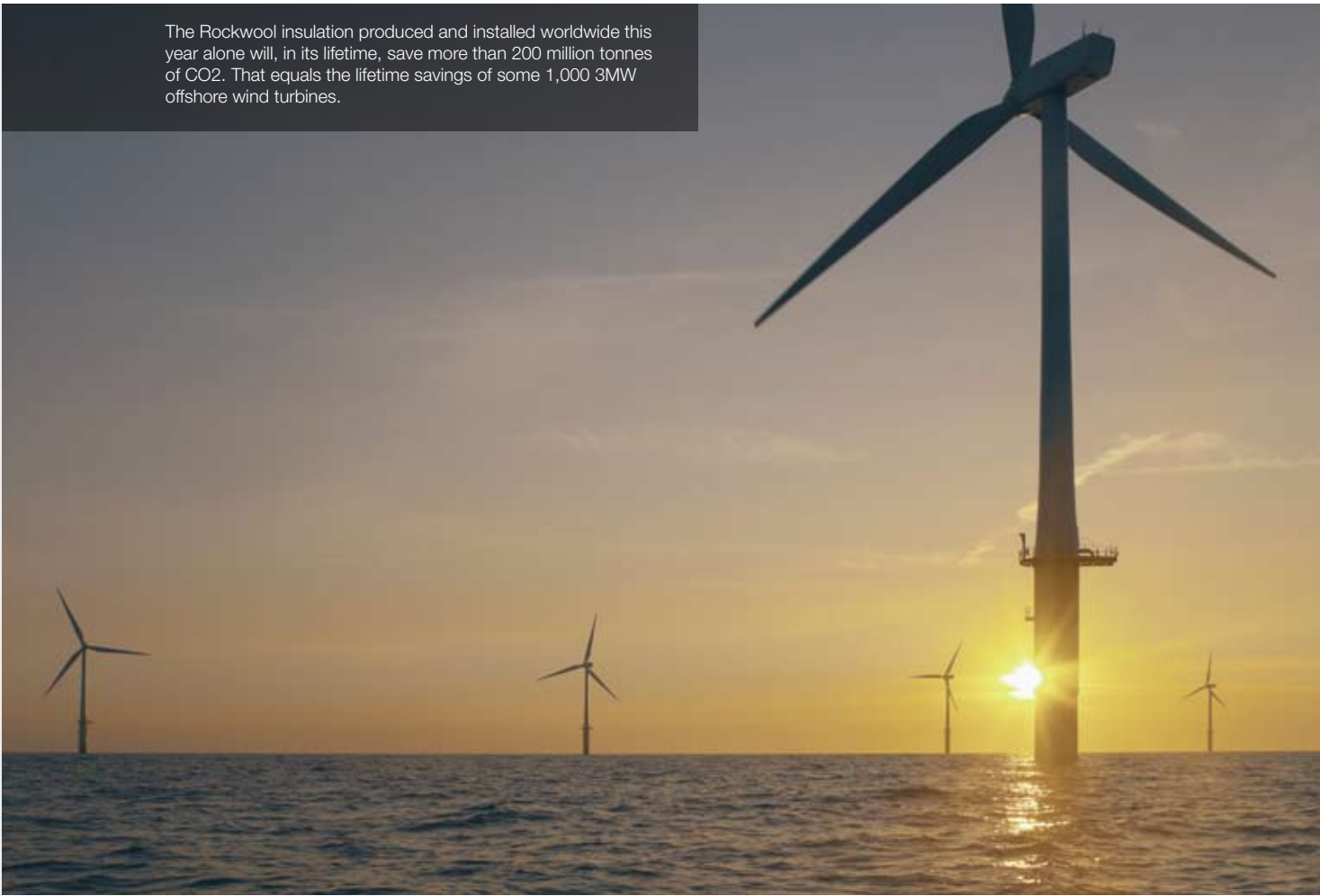
Rockwool insulation can help provide a solution to global warming efficiently, economically and safely. Energy savings in well insulated buildings improve air and water quality. The less fossil fuels we burn, the less smog, acid rain and eutrophication we get (an excess of nutrients that may disturb the bio-diversity in soil and water).

Insulation for life

In its lifetime, a typical Rockwool insulation product, manufactured and installed in the UK or in Ireland can save over 100 times more primary energy and CO₂ than is required for its production, transport, and should it be necessary, disposal at the end-of-life. It conserves scarce energy resources and reduces air pollution and CO₂ emissions by minimising the further combustion of fuel. The energy and CO₂ balances become positive only a few months after installation. When insulating hot pipes in industrial processes, the energy and CO₂ payback can be less than 24 hours and the return on invested energy and CO₂ can be more than 10,000 fold. So the more insulation that we produce that is installed, the more positive is the Rockwool Group's contribution to saving CO₂. Rockwool works closely with industry partners to develop innovative solutions to ensure we remain at the forefront as a sustainable choice of insulation for the 21st century.

Comparing Rockwool to other energy saving measures

The Rockwool insulation produced and installed worldwide this year alone will, in its lifetime, save more than 200 million tonnes of CO2. That equals the lifetime savings of some 1,000 3MW offshore wind turbines.



The use of Rockwool insulation and the other energy saving technologies shown in the table below all offer huge potential benefits for the environment and for forming elements of future UK and worldwide energy policies.

Well insulated buildings with renewable energy sources form an important part of the climate change solution.

'Green technology'	Life Cycle	Energy pay-back time	Energy savings ratio
1.5kW micro wind turbine	20 years	18 - 30 months	8 - 12 times
2.5kW PV solar panel	25 years	60 months	5 times
Rockwool	50 years (and longer)	0.3 - 3 months	100 - 10,000 times

Domestic heating data. Source: energysavingstrust.org.uk and own calculations and Force Technology/dk Teknik.

Building up to new standards



The use of Rockwool can not only help to protect the planet, but also provides safe and comfortable living and working environments.

Energy Performance of Building Directive (EPBD) and Building Regulations (Part L Amendment) Regulations 2008

The Energy Performance of Buildings Directive (EPBD) contains a range of provisions aimed at improving energy performance of residential and non-residential buildings, both new-build and existing. To satisfy the requirements of the EPBD, new improved energy performance standards have been set for all new buildings in the Republic of Ireland in the revised Building Regulations Part L.

The principal aims of the new Part L is for a 40% reduction with respect to 2004 levels in energy demand and carbon dioxide emissions associated with heating, domestic hot water and lighting leading to more sustainable homes and buildings. In 2010 this will be amended further to demand a 60% reduction.

The building fabric performance, that is the extent to which a building's walls, floors, roof and glazing limits heat loss, is the biggest single factor in providing an energy efficient design. An effective fabric reduces the energy required to heat the building, thereby

cutting the amount of fuel required. This results in a reduction in the associated CO₂ emissions and a reduction in the energy costs, a very important factor at a time of spiralling prices. The use of thermal insulation is the most cost effective way of ensuring an effective building fabric performance and improved energy efficiency.

BER

Another stipulation of the EPBD is that a Building Energy Rating (BER) certificate, effectively an energy label, will also be required for buildings constructed, sold or rented. In Ireland this is being implemented on a phased basis by Sustainable Energy Ireland (www.sei.ie) From 1st January 2009, a BER certificate became compulsory for all homes being sold or rented.

The BER is calculated for new and existing homes by using the Dwelling Energy Assessment Procedure (DEAP). The procedure is supplied by Sustainable Energy Ireland and takes into account a combination of the building materials utilised, building size, space heating, water heating, ventilation, lighting and

renewable energy sources. The results of the assessment are twofold. The primary energy use per square metre of floor space per year (represented on a scale from A to G where an A rated home is the most energy efficient and a G rated home is the least efficient) and the associated CO₂ emissions per square metre. New homes complying with the new Part L requirements would be expected to achieve at least a B3 rating.

The BER alone is a measure of energy performance and does not obligate the building owner to make improvements. However a highly rated building will be more attractive to prospective buyers and tenants and create an economic pressure to make the necessary improvements for more sustainable homes.

A role in PassivHaus design

Sustainable Energy Ireland's Renewable Energy Information Office in Cork have been promoting the PassivHaus concept. SEI have also commissioned 'Guidelines for the Design and Construction of Passive House Dwellings in Ireland' for self-builders and architects focussing on new build houses (and cover both conventional block construction and timber frame construction methods). They will ultimately become part of a suite of guidelines covering multiple dwellings, non-residential buildings, extensions and renovations.

PassivHaus is a concept used for some years elsewhere in Europe defining a low energy house.

A low-carbon society based on renewable energy, is not feasible without optimal energy efficiency. The solution is a well-insulated, energy-efficient building, where both the budget and space needed for renewable energy solutions can be realised, whether based on PassivHaus or other similar concepts.

Existing Buildings

Making new buildings energy efficient is very important, but it's not enough. Our existing buildings will account for the majority of the building stock for many decades. Many buildings were constructed before the oil crises and global warming became issues, and a large number of them are still poorly insulated.

Every time a building is modernised, it should be brought up to contemporary energy standards,



An example of PassivHaus design concept.

"Ireland's mild climate puts it in a favourable position to introduce Passive Houses to mainstream construction compared to the more severe climates prevalent in central Europe"

SEI - Passive Homes - Guidelines for the design and construction of Passive House Dwellings in Ireland

especially since it is economical and practical to add extra insulation and other energy saving measures when building work on areas such as the façade or roof are being carried out.

Sustainable Rockwool



Rockwool is committed to a continuous process of environmental improvement in two distinct ways that reflect the growing environmental concerns of society:

- Minimising our company's use of resources and emissions of pollutants to air, water and soil.
- Reducing the need for heating fuels and the pollution created by their combustion, through development and promotion of effective thermal insulation solutions.

We are all becoming increasingly mindful of how our actions are affecting the environment.

Sustainability is about fulfilling our needs today without compromising the prospects of future generations.

There are many good things we should do, but don't, because they would compromise our quality of life – like giving up private cars. However insulation is a financially beneficial way to abate CO₂ that actually improves our quality of life.

Rockwool across the world

Rockwool Limited is a member of the Rockwool International Group of companies that has its head office in Denmark. The Rockwool Group has 8,000 employees in more than 30 countries. The Group has been producing stone wool for more than 70 years and currently has 21 factories across Europe, North America and Asia.

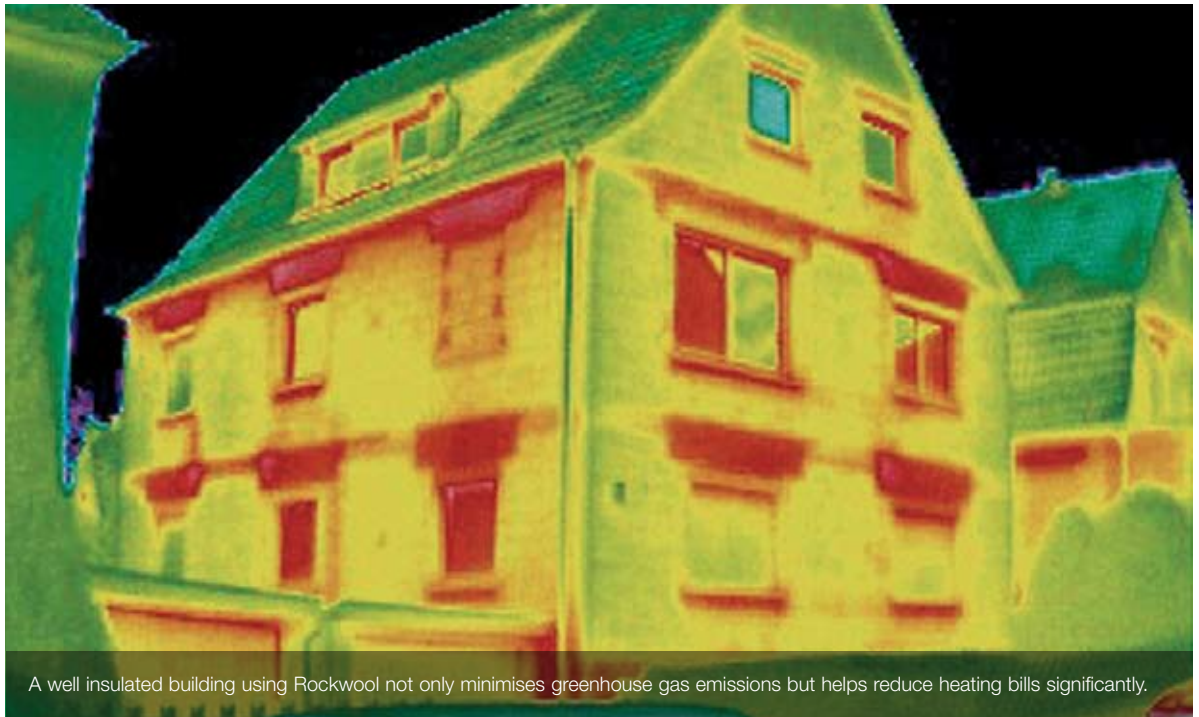
Rockwool recycles 300,000 tonnes of waste from other industries per year, significantly reducing the use of raw materials. We expect to increase this figure over the next few years.

For further information on the Rockwool International group please visit www.rockwool.com

Right: Rockwool International HQ - one of the most energy efficient office buildings in the world. For more detailed information log onto www1.rockwool.com/environment/building2k.



Committed to energy efficient, low emission production



A well insulated building using Rockwool not only minimises greenhouse gas emissions but helps reduce heating bills significantly.

Rockwool has some of the most technologically advanced production facilities in the world.

As part of the recent significant investment in the production facility in Wales, improved energy and emission reductions were designed into the state-of-the-art process so that doubling our manufacturing capacity has increased our efficiency substantially. Rockwool actively seeks to exceed and improve on strict Environment Agency performance requirements.

The Rockwool Group achieves continuous improvements, reducing the environmental impacts of our production activities, by investing in cutting edge technologies for equipment design and processes, such as high efficiency filter systems and after burner plants.

Maintaining the energy balance

The energy saved while an insulation product is in use hugely outweighs the energy consumed during its manufacture and all other phases of the product's life cycle.

Over a lifetime of use in a typical Irish building, Rockwool products can provide savings in greenhouse gases as a result of reduced heating that are more than hundred times bigger than the emissions associated with producing the Rockwool products used.

Environmental policy

As an environmentally responsible company, Rockwool has developed an Environmental Policy that aims to promote the sustainable production and use of our insulation by minimising waste, preventing pollution and operating an ISO 14001 accredited environmental management system. The Policy is freely available to staff, stakeholders and members of the public.

www.rockwool.ie/environmentpolicy



Reduce, reuse, recycle



Rockwool is committed to reduce waste to landfill.



Rockwool has installed equipment to collect rainwater and to treat and re-circulate water used within the process continually.

Rockwool has set ambitious targets to continuously improve its environmental impact. To help offset the energy used during production, reduce the use of virgin raw material and minimise waste, Rockwool has invested heavily in processes which allow us to reduce, reuse and recycle. To further expand our capacity to recycle stone wool, we opened a new recycling facility at our plant in Wales in August 2008 at a cost of more than €8 million.

Rockwool insulation is 97% recyclable - Rockwool insulation can be recycled into new Rockwool products at our Welsh factory. Please see our recycling procedure for practical details www.rockwool.ie/recycleprocedure.

Reduce

Reduction of waste generation and burdens sits at the top of the waste hierarchy. For Rockwool, 'reduce' means cutting down the amount of waste produced by working closely with other industries to identify useful materials to divert from the waste stream, reducing the amount of virgin raw material needed in our production and reducing fresh water extraction.

A naturally renewable raw material

A natural resource found in abundance around the world, diabase rock is the primary raw material used to manufacture our stone wool products. The natural process by which diabase is formed is taking place right now all over the world. Volcanic activity means that nature creates new reserves of diabase rock every year – around 38,000 times more than the entire Rockwool Group extracts.

Reducing our landfill burden year on year

Rockwool uses large quantities of by-products from other sectors, helping to solve a worldwide waste problem by minimising the amount of material sent to landfill. At present, these residual products help to form 20-30% of the cupola furnace charge. This benefits our industry partners, and crucially, has a positive effect on the environment by not only helping to reduce waste but in addition saving energy in extracting and transporting raw materials to our plant.

From 2002 to 2008 the Rockwool Group's waste to landfill decreased by 35%.

Water: conserving a valuable resource

Water is used within the production process. Rockwool has installed equipment to collect rainwater and to treat and re-circulate water used within the process continually. This minimises the demands on water supply arising from the site.

For more information on the high abundance and renewability of raw materials for stone wool production, view a recent article on www.rockwool.ie/dahlreport

Reuse

Reusing is the second stage of the waste hierarchy. After reducing the volume of waste created, recovering useful waste for reuse is the next step.

Using heat wisely

Waste streams do not consist solely of solid waste; they also include wasted heat energy. Wasted energy doesn't impact on landfill but is nonetheless a heavy drain on resources.

The Rockwool furnaces at the production plant in Wales generate heat energy which is captured and transported away by the cooling water flowing around the equipment. Rather than simply allowing this energy to be wasted, it is used to heat the office spaces and provide hot water across the site.



Rather than waste the excess energy from the furnaces, Rockwool re-distribute this energy to heat their offices.

Recycle

Once waste has been reduced and all valuable elements from waste streams have been identified and extracted, recycling is the final tier of the waste hierarchy to come into effect. Recycling has the benefits of reducing the need for extraction of raw materials, saving energy and diverting waste from landfill.

Converting our own by-products

The new recycling facility at our plant in Wales is capable of meeting growing customer demand for recycling over the foreseeable future, and demonstrates Rockwool's commitment to recycling on a much larger scale.

Redundant materials returned from site, and various by-products from the manufacturing process, are converted into 'briquettes'. These briquettes currently form approximately 30% of the cupola furnace charge.

Off-cuts

Any Rockwool off-cuts created during production are recovered and recycled back into the manufacturing process to reduce our use of virgin raw materials. This reduces the impact of extraction and saves valuable energy.

Iron

As with many production processes, the Rockwool manufacturing process generates by-products. One of these by-products is pig iron, which is drawn off the furnace at regular intervals. Rather than treating this as waste for disposal, Rockwool has worked with other industries to find a reuse route for the material locally, where it can be melted down into new products.

Pit Waste

Molten waste from the Rockwool process can be used as a building substrate when it has cooled and hardened. A substantial amount of this material was used in building the recent extension to the factory in Wales. In addition, Rockwool provides this material to local landowners for the creation of pathways and driveways on their property. Following this successful reuse, Rockwool is now investigating other possible uses for the material in construction.

Recycling benefits everyone

Not only does our recycling system enable us to provide a waste solution for customers, it enables us to increase the recycled content of the products we produce to the benefit of the environment, increasing production efficiency and diverting waste from landfill.

Continuing the journey

Rockwool's reduction, reuse and recycling of materials has already paid environmental dividends.

In accordance with ISO 14021, Rockwool products contain 20-30% of recycled content¹.

In accordance with WRAP (Waste & Resources Action Programme) 'rules of thumb' Rockwool products contain over 50% of recycled content².

However, we are aware that it is by no means 'job done'. That is why we are committed to improving the efficiency of our processes and reducing their environmental impact year-on-year.

¹2008 Rockwool UK production data.

²www.wrap.org.uk/downloads/Rules_of_Thumb1.bcb3f569.4939.pdf



Waste from the Rockwool manufacturing process was used in the building of the recent factory expansion.

Recycling Case Study: Investment Bank Data Centre



Mobile recycling unit shredding composite panels.



A recent case study by WRAP (Waste & Resources Action Programme) describes the recycling of composite sandwich panels, comprising stone wool and steel facings, following the refurbishment of a computer data centre. 17,000m² of Eurobond composite wall and ceiling panels were installed at the data centre in East Grinstead, Sussex. Waste resulting from doorway cut outs, off-cuts and site damaged panels, added up to approximately 1,800m² which was re-processed into new materials: steel and stone wool.

The case study forms part of an ongoing working partnership between Rockwool, Eurobond, Corus and GD Environmental.

Providing contractors with the unique ability to begin recycling on site, a mobile unit was brought in to shred the composite panels and separate all steel from stone wool whilst depositing it into individual

containers for compression prior to delivery back to the manufacturers. Reducing the need for transportation the mobile unit helps minimise both the environmental and financial impact.

The quality of all recovered steel and stone wool allowed the simple transfer of materials back into the manufacturing process. The form of the recovered steel enables it to be introduced into the blast furnace at a significantly lower temperature than is necessary for iron ore, thus lowering energy input and CO₂ production.

For further information on this Case Study, please log on to http://www.wrap.org.uk/downloads/Eurobond_WRAP_6JD_FINAL1.0811e21c.5535.pdf

To view the Rockwool 'From Waste to Resource' video visit www.rockwool.co.uk/waste2resources

Life Cycle Analysis (LCA)



Rockwool supports and uses LCA, going beyond carbon foot printing and greenhouse gas emissions, providing a fuller picture of the environmental impacts of its products and processes.

What is an LCA?

The Rockwool LCA is a comprehensive assessment of data undertaken in accordance with the requirements of ISO 14040, analysing the total energy consumed in the pre-production, production, delivery and end of life phases of a manufactured product. This represents the total energy consumed in all phases, including the energy consumed at electric utilities.

Why is an LCA important?

The holistic approach of Life Cycle Analysis presents a more comprehensive picture of the impact of a product than simply looking at the production process. As a peer reviewed LCA deals in facts and hard evidence, it has a high degree of integrity and substance which is why Rockwool has chosen to champion and support its use.

To better understand the performance of its products, Rockwool has benchmarked itself against a wide range of insulation materials. One such study was undertaken by dk-Teknik to assess the performance of materials sometimes described as natural. In addition to a typical Rockwool product, the investigation included insulation products manufactured from flax and cellulose. Rockwool was shown to have the lowest primary energy consumption and global and regional environmental impacts falling between the other two materials.

For further information on the dk-Teknik investigation log on to www.forcetechnology.com/en

Beyond Carbon Foot Printing

Carbon Footprint is a term which is used extensively in the media. A carbon footprint is a measure of the impact on the environment, and in particular on climate change, from the production of greenhouse gases. In our opinion, whilst it is important to be able to measure and set targets against greenhouse gas production, it is only a small part of the story. The LCA approach goes beyond carbon foot-printing to provide a fuller picture of environmental impact.

Primary Energy

Primary Energy, is the sum of energy used in extracting raw materials, pre-production, manufacture, transport and end of life disposal. The all encompassing methodology used to produce an LCA calculates the Primary Energy in order to provide an accurate measure of energy usage associated with the products.

Embodied energy is a term which is sometimes used to describe only part of the total energy impacts associated with a product's life cycle.

Corporate and social responsibility

The Rockwool Foundation

Rockwool is a business that has a strong sense of being part of a local community. This translates into having a responsibility and an obligation to that community. This conviction to society and the environment started in the 1950s and came long before CSR became fashionable, and is at the core of the Rockwool Group values.

Established in 1981 by the founding Kahler family, the Rockwool Foundation is a non-profit organisation with the objective of supporting scientific, humanitarian, artistic or social goals and contributing to the improvement of the environment and the general development of society. As a result the Rockwool Foundation has been the largest single shareholder in the company for the past 27 years.

Today the Rockwool Foundation research unit is probably Denmark's most respected non-political think tank for social and economic studies. These studies, for example, on the efficiencies and inefficiencies of the health care system, are used actively by governments on both sides of the political spectrum to make a better society.

Article 13

Article 13, a consultancy specialising in Corporate Social Responsibility (CSR), regularly publishing case studies from CBI members carrying out innovative work in Corporate Social Responsibility.

The profile for the Rockwool Group picked out how our environmental performance showed a dedication to values established within the company decades before the term CSR was coined. The case study, published in 2003, demonstrates how Rockwool's commitment to CSR and environmental performance is not a reaction to the current trend within business but has been a part of our ethos since the beginning.

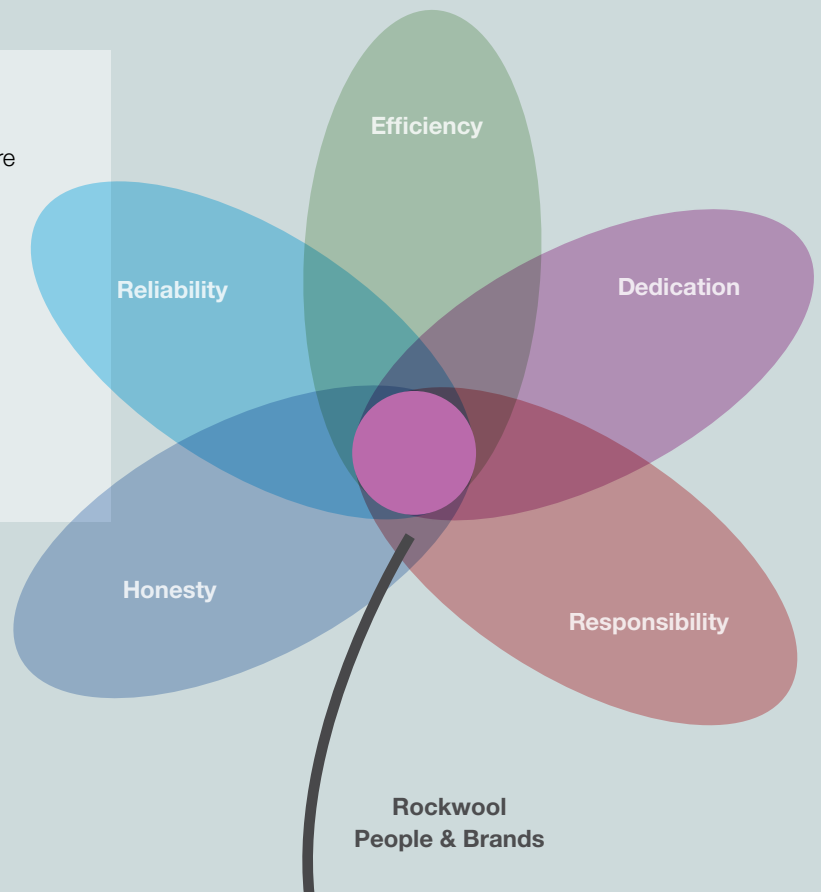
These values are still relevant to how we operate today and will continue in the future.

The study may be found on
www.article13.com

Rockwool's core values

Rockwool puts people at the centre of its core values:

- Reliability
- Honesty
- Efficiency
- Dedication
- Responsibility



Engaging with communities



The learning centre at our manufacturing site constructed for the Rockwool Woodland for Learning Trust, a registered charity that sponsors and works with local communities.

Rockwool works closely with local schools and local councils. At our manufacturing site we are surrounded by woodland and a nature reserve. The Rockwool Woodland for Learning Trust are pleased to welcome children from the nearby schools to spend time on outdoor nature projects, aiding and nurturing their education, linking into their curricular requirements.

Good community relations

We work closely with local residents to ensure that they are always kept informed about any developments and projects on our site. We have a good relationship with the local community, respecting their needs and privacy, and always try to ensure we minimise any disruption to their daily lives, which might be caused by noise, traffic or our general business activities. A good responsible relationship with those who live close to a Rockwool factory is a prerequisite for the environmental improvements we secure around the globe.

Employee, friends and family schemes

To ensure that our employees, their friends and families have the opportunity to save energy and money, we recently undertook a scheme providing free loft insulation. The scheme enabled local homes to be upgraded to the latest building regulation requirements – helping to reduce CO₂ and improve awareness of energy efficiency as well as saving money on heating bills and contributing to well-being in the home.

Charity links

Rockwool is proud to contribute and provide financial support to both local and national charities, which include causes nominated annually by employees.

Awards and Achievements



Our ongoing commitment to improve our environmental performance is illustrated by the successes listed below.

- **Wales Environment Awards Team Winner**
- **Overall Winner of Wales Environment Award**
- **Exemplary performance highlighted by the Environmental Agency in its annual 'Spotlight' report**
- **Awarded the accolade 'Smart Company' by the Carbon Trust**
- **Awarded Arena Network Award for 10 years of sustained, year-on-year environmental best practice**
- **Business in the Community Awards – 'Big Tick' for excellence in corporate responsibility and cohesion**
- **Short listed for 'EDF Energy Environmental Award'**

Why choose Rockwool?

Rockwool is shown by independent assessments to be amongst the most sustainable insulation products available anywhere, leading to an unrivalled combination of environmental savings, energy reduction, sound insulation and fire safety.

4-in-1

Rockwool can deliver 4 superior benefits from 1 product – Thermal, Fire, Acoustics, Sustainability.

Thermal

Because we spend a large proportion of our lives indoors, the indoor climate can have a significant impact on our health and wellbeing. Insulation, airtight construction and controlled ventilation are essential for a better indoor environment. Better insulation offers great opportunities for financial energy savings. Not only will it keep out the cold in winter, it will also stop the building from becoming uncomfortably hot in the summer.

Fire

Durability is crucial for the whole-life environmental impact of a product and the building in which it is used. Rockwool is a non-combustible material manufactured primarily from stone. It can resist more than 1000°C and can act as a vital barrier to the spread of fire. It is used in systems to enable people to escape from a burning building, and to delay the spread of fire, allowing firefighters time to fight the fire and save the building before it becomes uneconomical to repair.

Acoustics

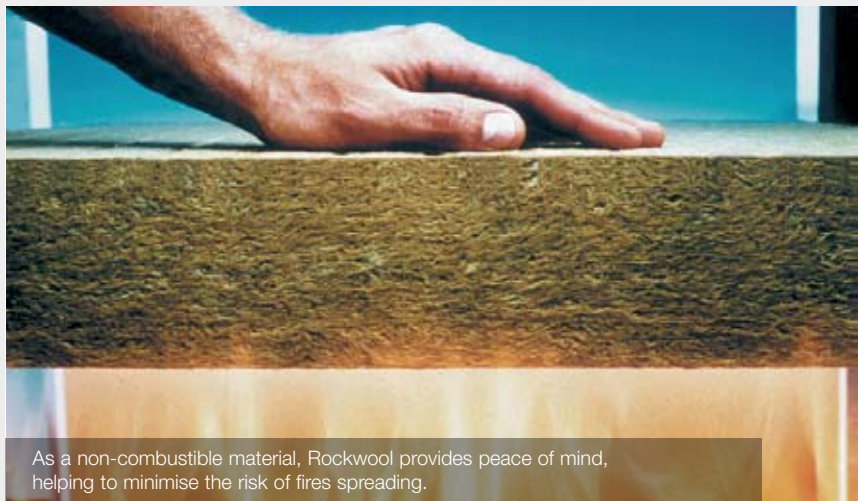
In addition to CO₂ abatement and creating a comfortable, safe indoor climate, Rockwool can also help to keep the peace. Every day - and night - millions of people around the world are suffering from the effects of noise pollution. Rockwool has an open structure that absorbs and can be used to regulate sound, helping to reduce noise from neighbours and create better environments for education and healthcare.

Sustainability

Rockwool insulation is one of the most practical, cost effective and environmentally efficient means of reducing energy consumption in the home and in industry. Its use reduces the need to burn fossil fuels, reduces CO₂ released into the environment and helps avoid climate change.



Rockwool can help to keep the peace, providing comfortable environments.



As a non-combustible material, Rockwool provides peace of mind, helping to minimise the risk of fires spreading.

ISO 14001

Rockwool has been accredited with the ISO 14001 standard for environmental management.

This standard requires that policies, objectives and targets are effectively set, implemented and reviewed for effective environmental management within the organisation and to facilitate continuous improvement. Third party accreditation and auditing demonstrates our open and honest approach to monitoring and reporting.

Rockwool Sustainability Checklist

	Page	
Rockwool provides exceptional Thermal, Fire, Acoustic and Sustainable properties	3	<input checked="" type="checkbox"/>
Zero Ozone Depleting Potential and Zero Global Warming Potential - Rockwool simply uses air	4	<input checked="" type="checkbox"/>
A typical Rockwool product can save a 100 fold more primary energy and CO ₂ in its lifetime than is required to produce it	4	<input checked="" type="checkbox"/>
Insulation is one of the most practical and cost effective means of reducing energy consumption in the home and industry	5	<input checked="" type="checkbox"/>
Rockwool insulation produced and installed worldwide this year alone will, in its lifetime, save more than 200 million tonnes of CO ₂	5	<input checked="" type="checkbox"/>
Rockwool insulation is 97% recyclable	10	<input checked="" type="checkbox"/>
Rockwool is committed to reducing waste to landfill and is continually working on innovative ways to meet this objective	10	<input checked="" type="checkbox"/>
Rockwool has been accredited with the ISO 14001 standard for environmental management	18	<input checked="" type="checkbox"/>

ROCKWOOL®



Rockwool Limited
Unit 11, Northwood Court,
Santry, Dublin 9
Ireland